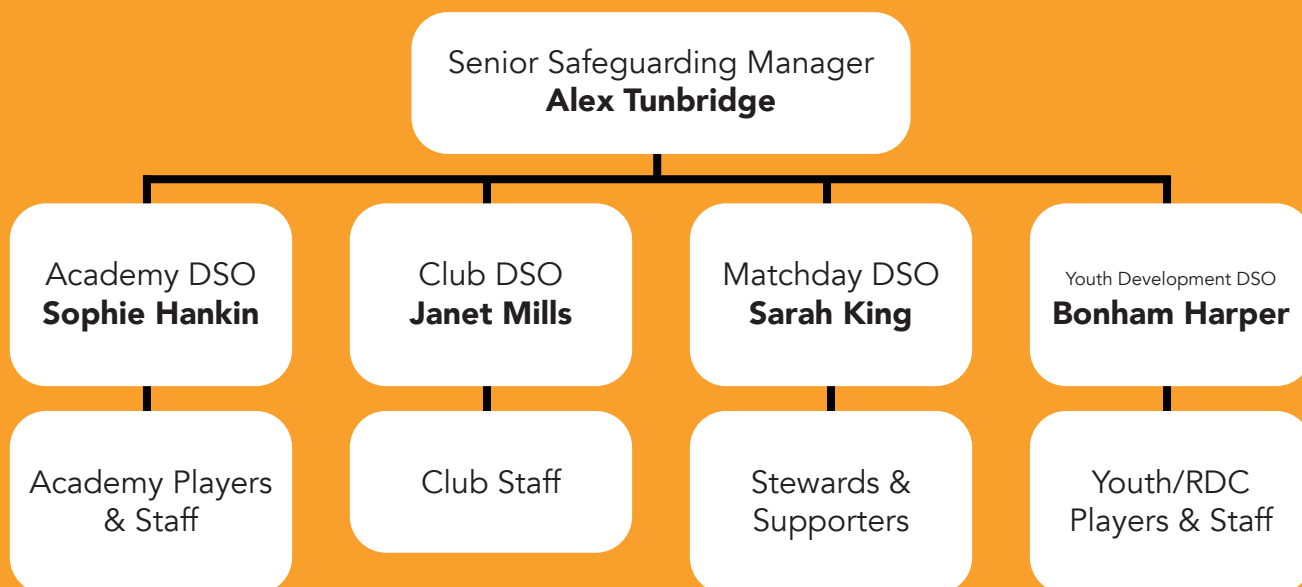




CAMBRIDGE UNITED

SAFEGUARDING

Staff Chart



If a child makes a disclosure to you...

Do

- Remain Calm
- Ensure Immediate Safety of the Child
- Reassure the Child
- Take detailed notes retrospectively
- Take what the child says seriously

Don't

- Promise confidentiality
- Leave the child on their own
- Ask them to show you bruises/marks
- Take notes in front of the child
- Ask leading questions

Using MyConcern



You **MUST** record any incident, accident or safeguarding concern as soon as possible following the event on Myconcern. Use either app or www.myconcern.education.

To do this click the red "Report a Concern" button and enter as much detail as possible accurately and factually in the relevant boxes. Also include any action taken on the matter.

Important Contacts

Sophie Hankin

Academy DSO

07889563341
harisa@cambridgeunited.com

Callum Langley

Player Care Manager

07769217874
calluml@cambridgeunited.com

Sarah King

Matchday DSO

07756 286999
safeguarding@cambridgeunited.com

Bonham Harper

Youth Development

07769 217879
bonhamh@cambridgeunited.com

Monitor if...

Low Level Concern

Any concern, no matter how small that causes a nagging sense of unease.

Examples Include:

- Foul/abusive language toward children/ staff/officials
- Sustained change in behaviour
- Continued, preferential treatment of certain children
- Parent consistently late for collection/ child missing increasing number of sessions

Action Required: Report to phase lead and continue to monitor.

Report if...

Medium Level Concern

A concern that requires an intervention but safety is not an immediate issue

Examples include:

- Visible bruising/marks not consistent with football
- Emotional outbursts, drastic change in mood (overtly expressive/withdrawn)
- Dressing inappropriately for weather
- Change in weight/appearance

Action Required: Report on MyConcern and/ or inform DSO.

Take action if...

High Level Concern

A concern where someone's immediate safety is at threat

Examples include:

- Any form of suspected child abuse
- Disclosure of abuse from a child
- Visible peer-on-peer abuse (bullying)
- Apparent fear of parent/guardian or going home

Action Required: Contact DSO immediately and emergency services. Remain with person at risk.